



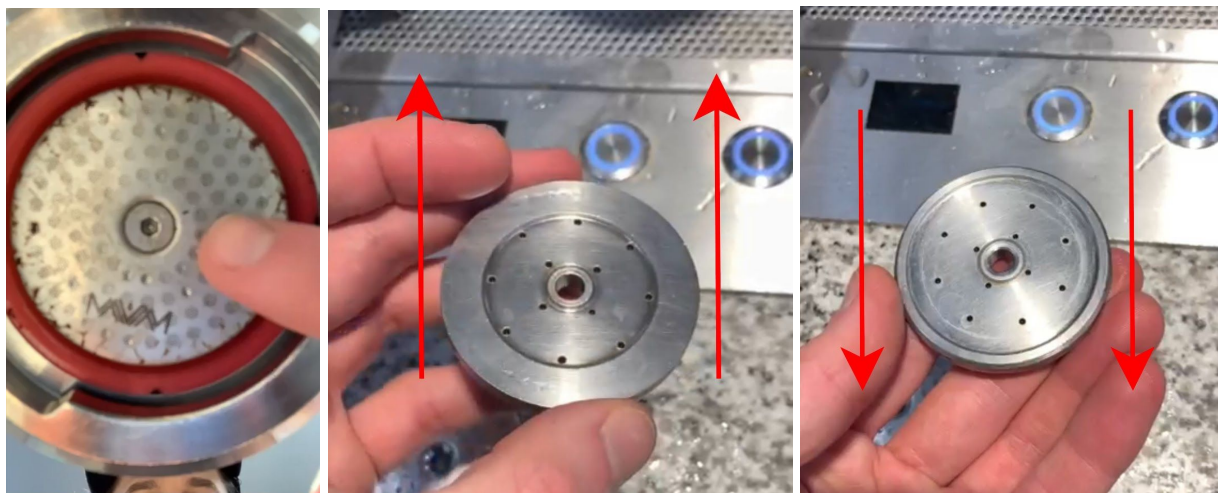
## TECHNICAL DOCUMENT

### 4002 Cleaning Document including Screen Removal

Cleaning the group should be done daily. The procedure is a multi step operation. Please read the steps below before starting the cleaning procedure for the first time.

#### Step 1:

Using a 3mm allen / hex key, remove the group screw which frees the shower screen and diffusion plate from the group. Soak these in coffee machine cleaning powder, rinse thoroughly and set them aside. Wipe and brush out any residual coffee from the group and group gasket. Replace the diffusion plate (flat side up, beveled side down) and screen then tighten the group screw back in place, be careful not to overtighten.



#### Step 2:

To clean use half a teaspoon of coffee machine cleaning powder in a blind filter basket. Access the menu. The first menu option is "Clean yes / no ?" using the right brew button or paddle, select yes and then enter.



The cleaning cycle will start. The pump will cycle on / off 10 times and will count up until the barista display reads 10 | 10 . Once the cleaning cycle is complete, remove the handle. Run the group and rinse all the cleaning powder out of the blind filter and wait until the water coming from the group is clean and free from powder as well. Then lock the blind filter back in again and repeat the cleaning cycle again. If you forget to add powder or start the cleaning cycle by accident, pressing any button cancels the cycle. The second cleaning cycle is very important as it ensures you rinse all of the cleaning powder out of the valve and avoids blockages.